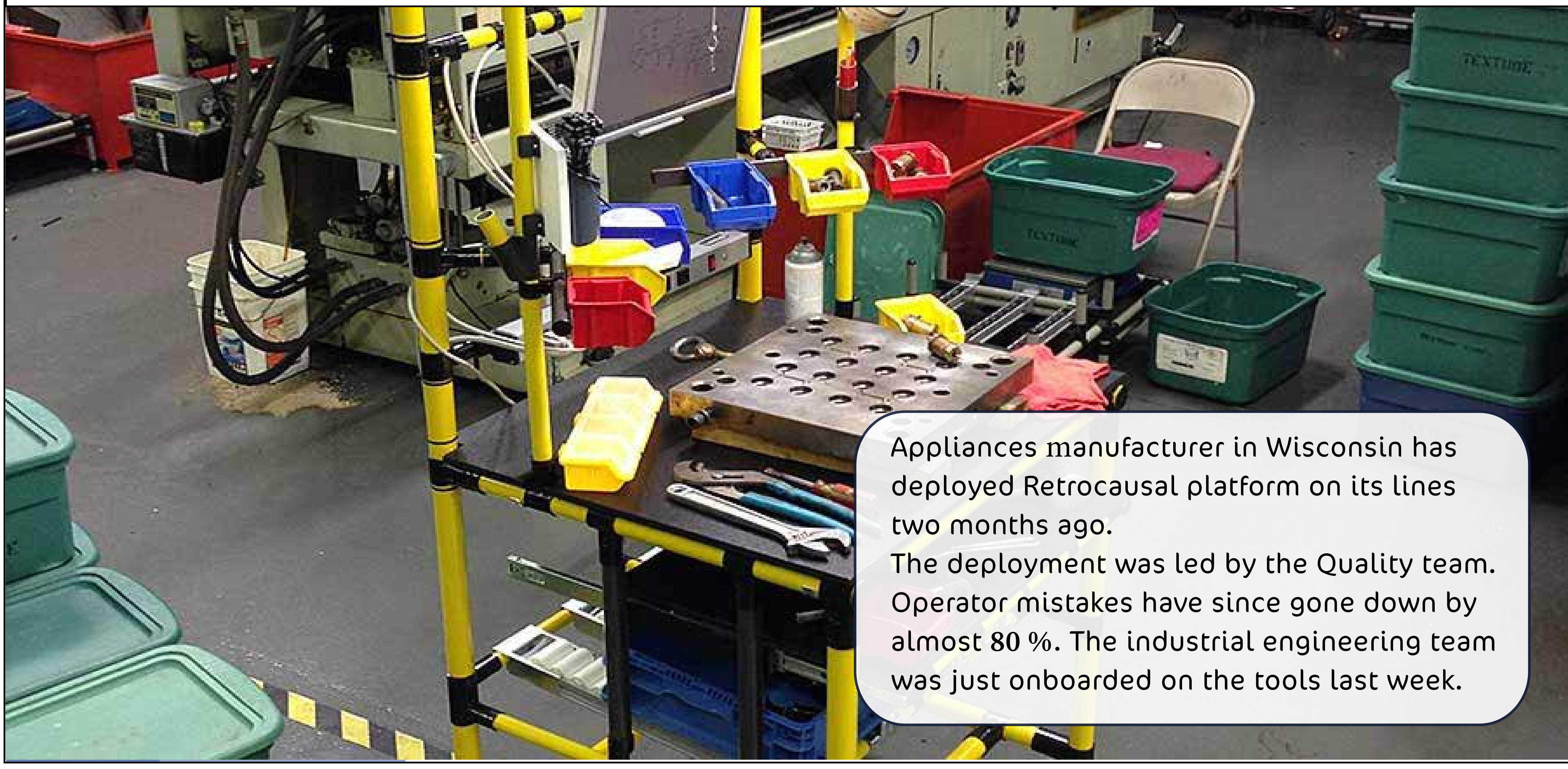




# RetroActivity: The Industry 4.0 comics

## Episode 5: Prescriptive Analytics helps optimize processes



Appliances manufacturer in Wisconsin has deployed Retrocausal platform on its lines two months ago. The deployment was led by the Quality team. Operator mistakes have since gone down by almost 80%. The industrial engineering team was just onboarded on the tools last week.

Linda is the Lead Industrial Engineer, and Trevor and Julian are in her team.

They are discussing analytical insights from the Retrocausal platform in the Obeya Room, which provides collaboration functionality and allows tagging any piece of information within the platform.

Takt Grade

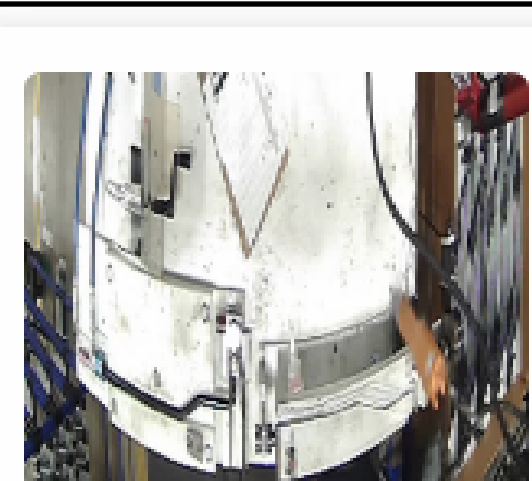
C+



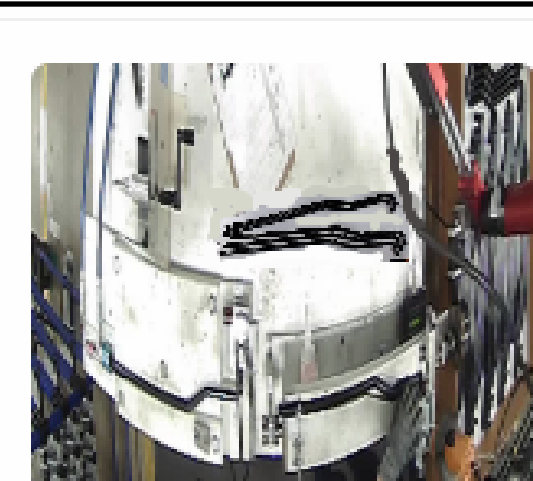
@trevor, @julian Do you guys know why the performance on "Gas Pipe Assembly" station 12 is so bad according to the software?

@linda, The process received 57% takt performance yesterday. That's why.

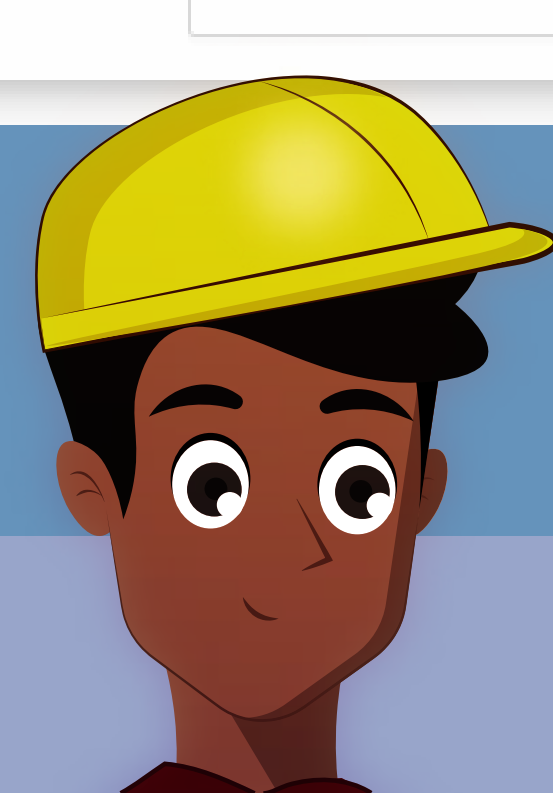
I am surprised by this because Average Value Add Percentage is still shown at 84% which is pretty decent.



Cycle Identifier: 2022-01-13 06:32:53  
Cycle Time: 0:00:43  
Missed Steps: 0  
Show Missed Steps | Comments 0



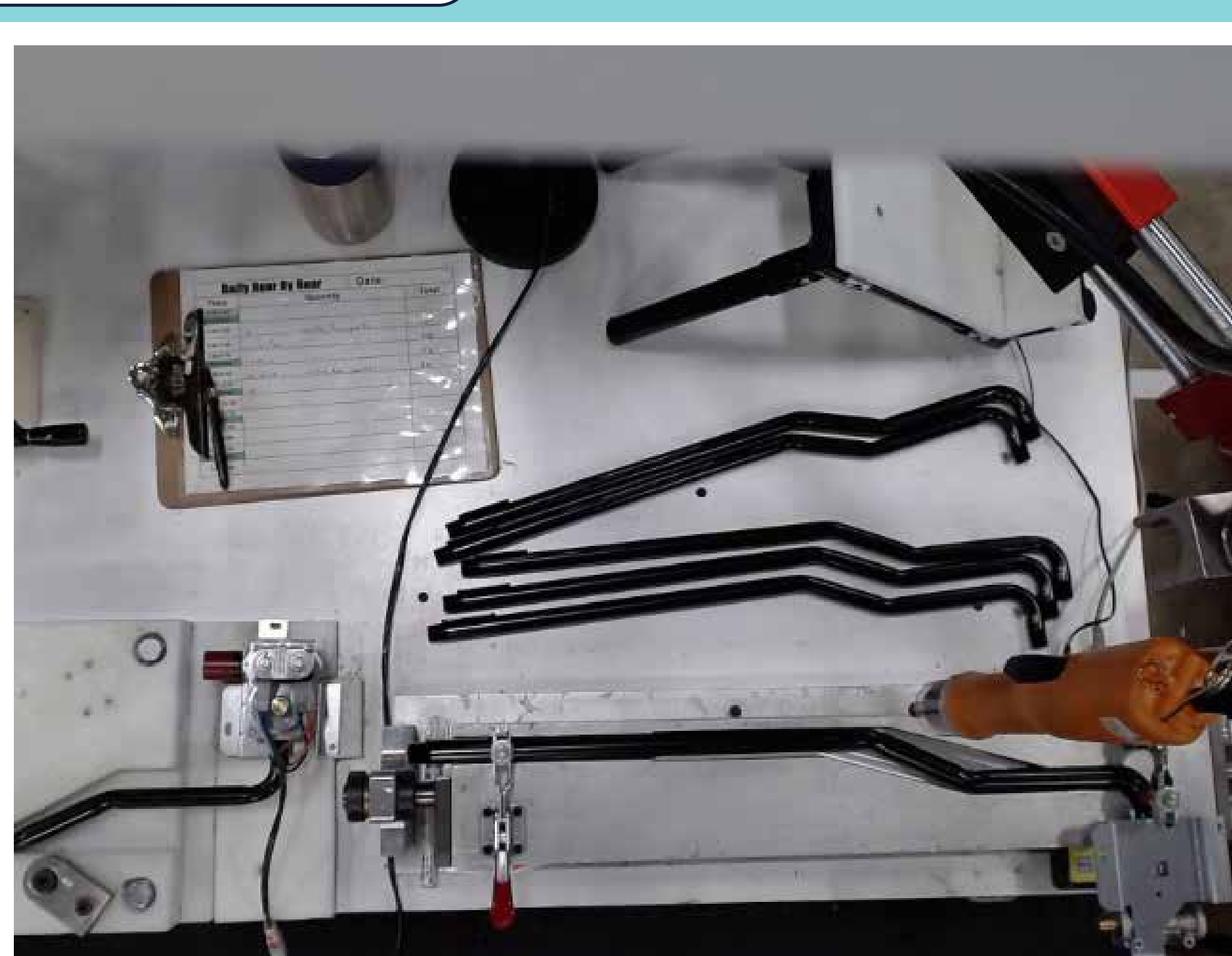
Cycle Identifier: 2022-01-13 06:36:34  
Cycle Time: 0:00:40  
Missed Steps: 0  
Show Missed Steps | Comments 0



@linda, @trevor It's not surprising. The individual cycle times are tight, but after every couple of cycles the operator seems to take a break for several minutes! Check the timestamps on these adjacent cycles.

and look what I found! It seems that the operator is having to go all the way to the back to fetch a number of pipes to this station! That's what causing the issue!

The system identified the best cycle time, and expects a certain number of cycles to be completed in a session...but there's a lot of time being wasted being some of the cycles!



@julian Great catch! I think I understand what happened!

@julian The supply bin for pipes was shared between two station, and we recently moved the other station to the south corner of the facility. Somehow the issue of common supply bin never came up, until now!

@trevor Can you work with the operations people to ensure there's a bin refilled with pipes from logistics right next to this station asap?

@linda Will do! Nice catch indeed.



## Next week...



Takt Grade

A-

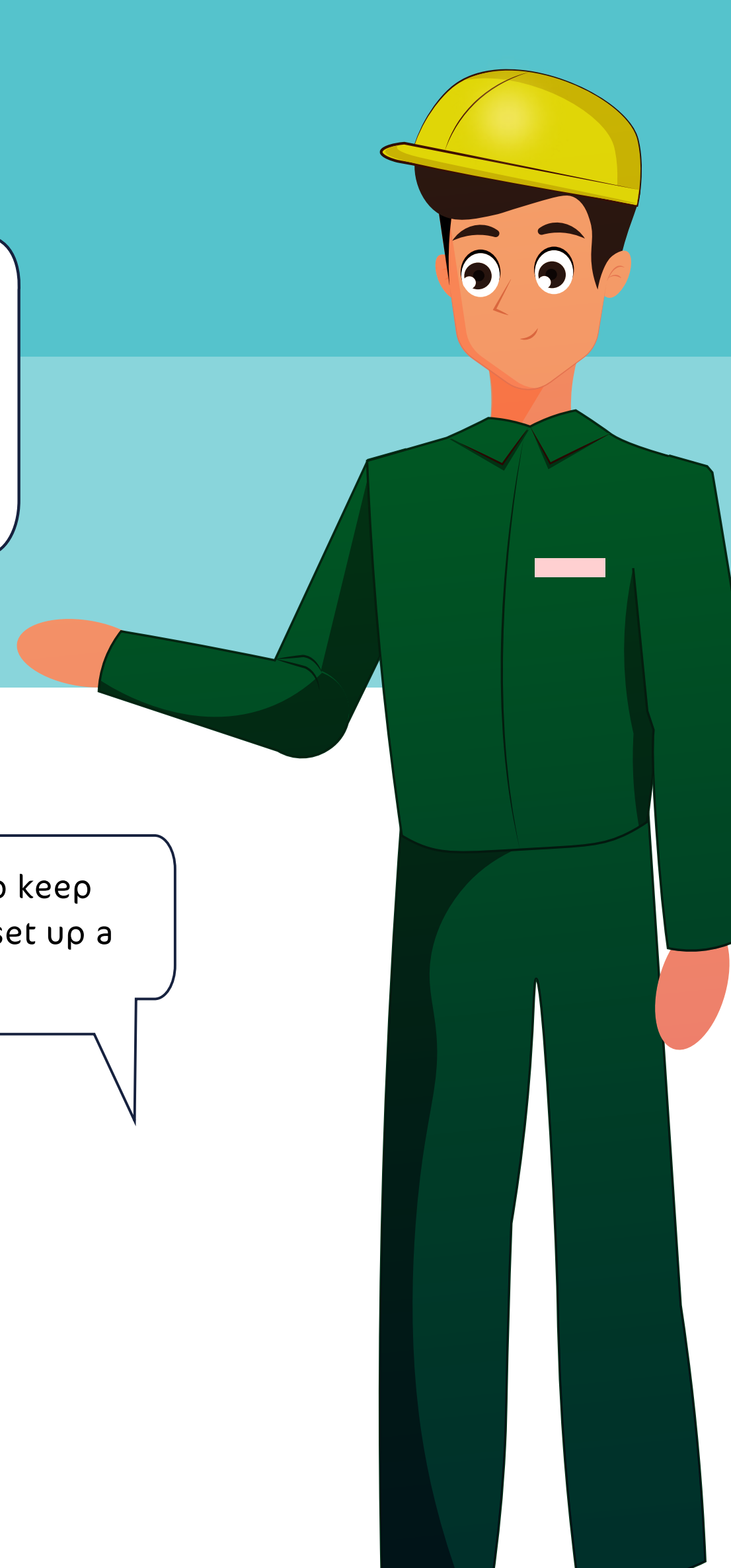


@trevor, @julian Good job guys! I can see the new pipe supply bin on the right from the camera view. The takt grade for morning shift was A-, which is a respectable boost!



Trevor, in addition to Obeya Room we should also onboard the operations team on Retrocausal smartphone app as well. It can show them the takt performance for every station for any given time period.

Absolutely! Its a fantastic tool to keep track of manual production. I'll set up a call with them!



Learn more : [www.Retrocausal.ai](http://www.Retrocausal.ai)